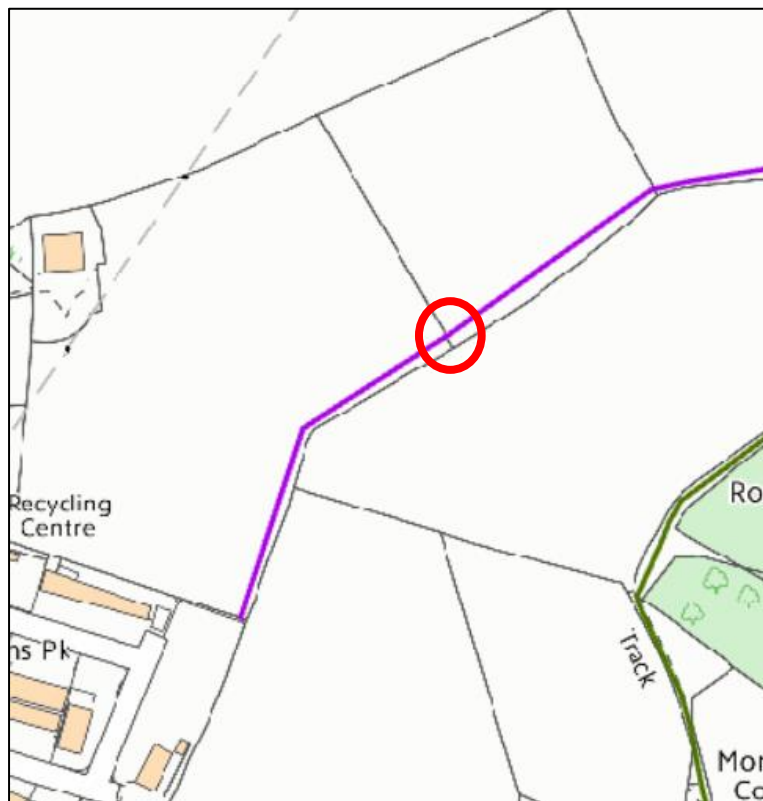


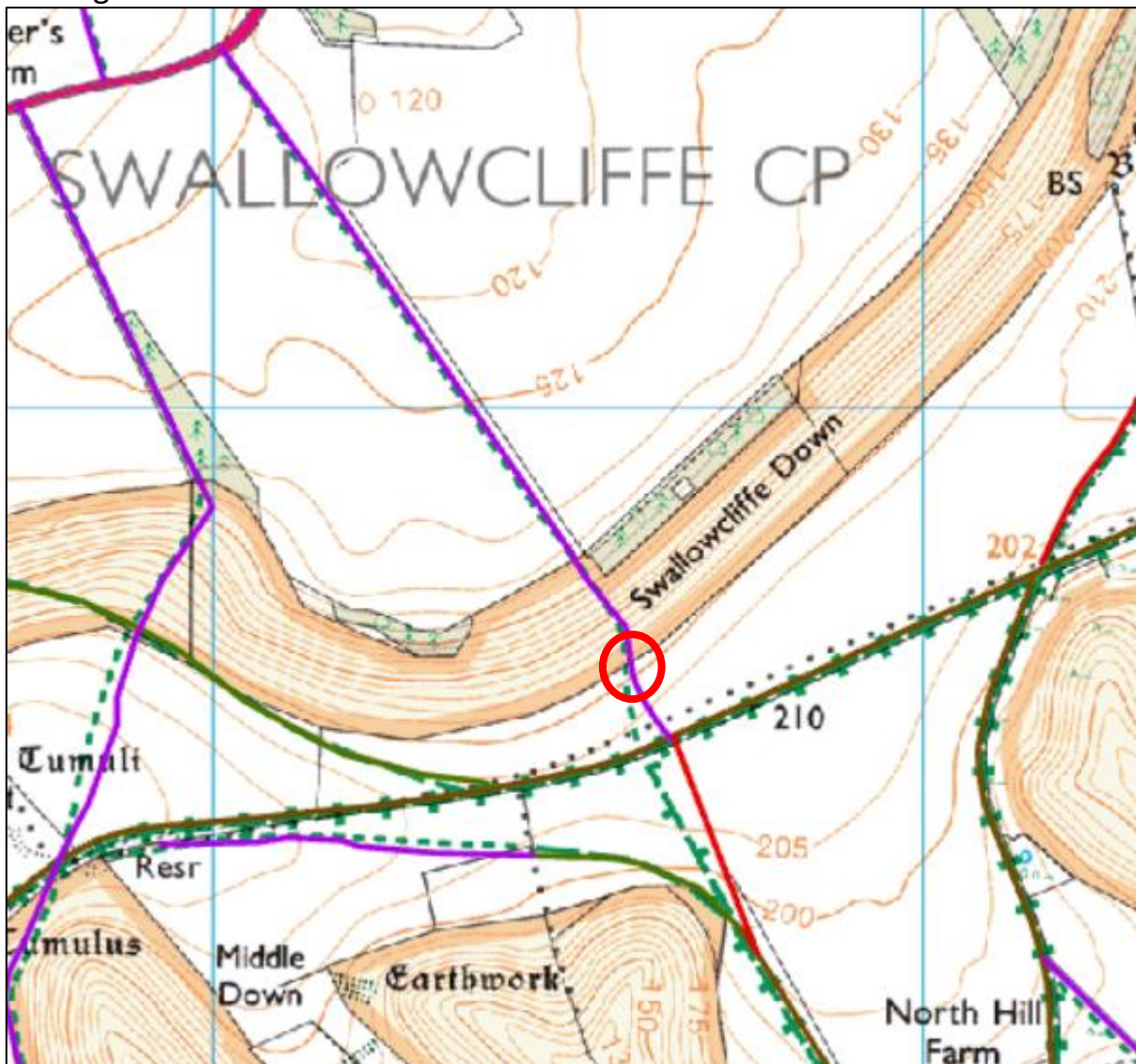
Donhead St Mary

DSTM4 - Replace stile with gate at ST 8734 2446.



Swallowcliffe

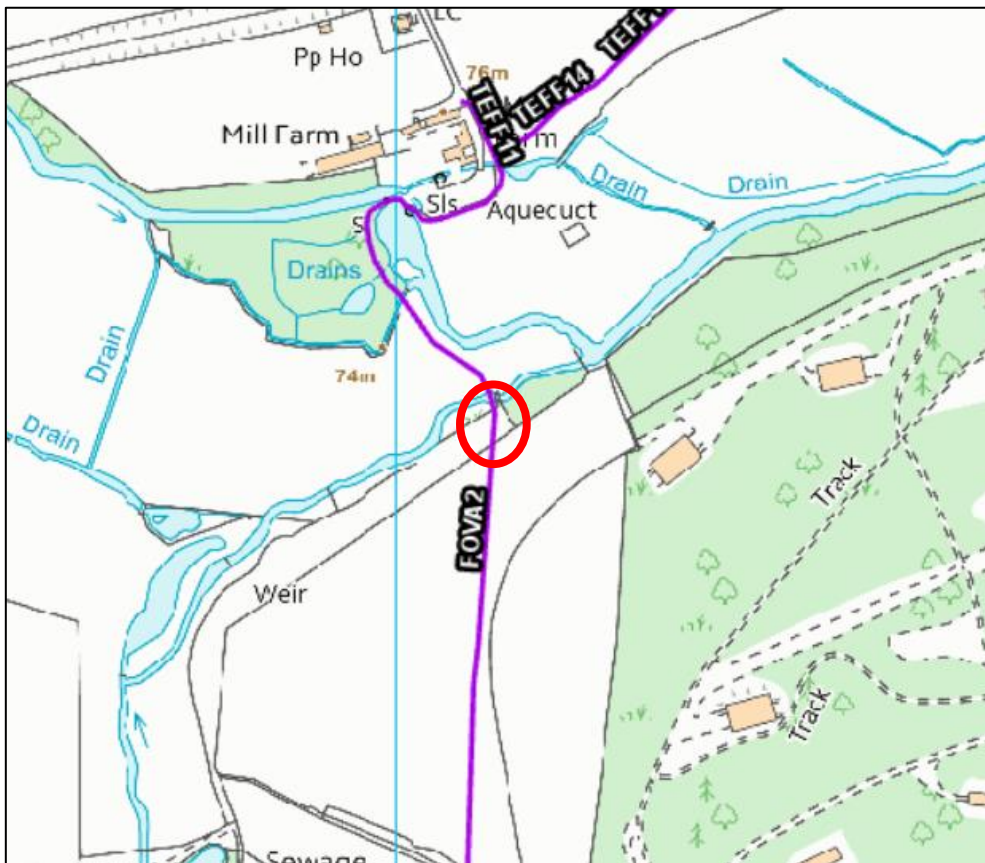
SWAL10 - Replace stile with gate at ST 975 256 - both steps are rotten and on the ground.



Donhead St Andrew: DSTA1 - Improve short muddy section between highway and bridge at ST 9150 2472.



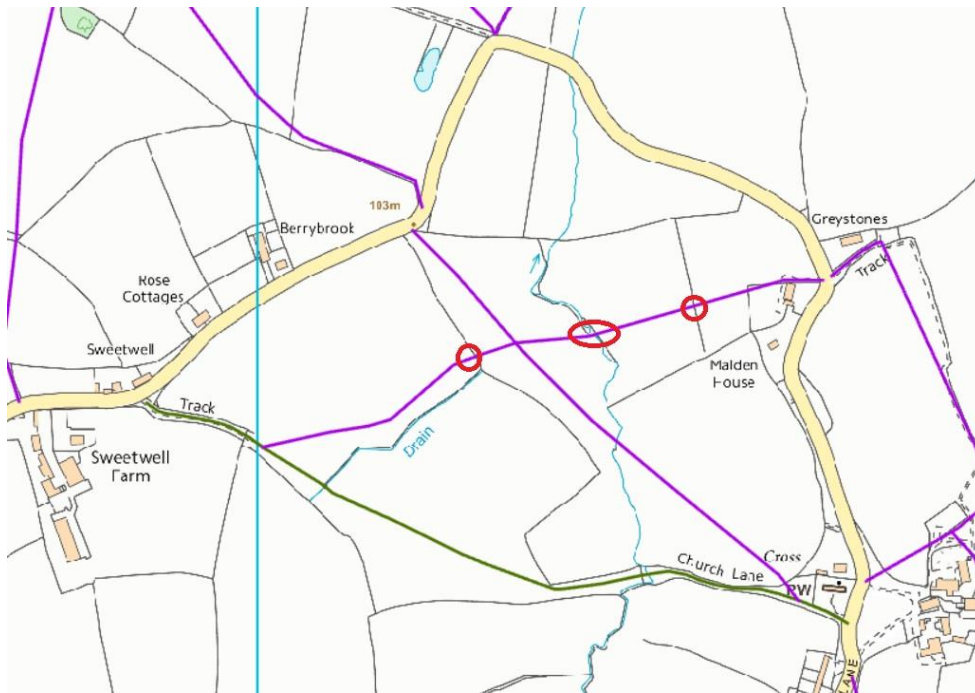
Fovant: FOVA2 - Install steps down bank to improve access at SU 0007 3047.



Mere: MERE38 – Replace stile and install sleeper bridge or similar in wet area between fields ST 8262 3059.



Sedgehill: SESE8 Four gates and a bridge needed along the path



Ansty: ANST10, ANST11, ANST12

Wooden gates in place of stile would greatly improve access on these popular paths

